



WINDSOR LIGHT
MUSIC THEATRE

ROALD DAHL'S
CHARLIE
AND THE CHOCOLATE FACTORY
THE NEW MUSICAL

DIRECTOR
MATTHEW DUMOUCHEL

MUSICAL DIRECTOR
NICHOLAS MORVAY

CHOREOGRAPHER
CINDY PATTISON-RIVARD

SPRING 2023

CHARLIE AND THE CHOCOLATE FACTORY is presented through special arrangement with Music Theatre International (MTI).
All authorized performance materials are also supplied by MTI. www.mtishows.com




BEAUMONT
& ASSOCIATES

Exceptional Service in All Aspects of Real Estate.

CALL OUR TEAM TODAY!


ELAINE BEAUMONT
REALTOR®

 **519.971.4274**


ROYAL LEPAGE

Binder Real Estate
BROKERAGE
INDEPENDENTLY OWNED AND OPERATED

CAITLIN BEAUMONT
REALTOR®

226.975.4905 

BEAUMONTANDASSOCIATES.COM

WINDSOR LIGHT MUSIC THEATRE PRESENTS ITS 143RD SUCCESSIVE MAJOR
MUSICAL PRODUCTION



Roald Dahl's CHARLIE AND THE CHOCOLATE FACTORY

Book by
David Greig

Music by
Marc Shaiman

Lyrics by
Scott Wittman
Marc Shaiman

Based on the novel by ROALD DAHL

Songs from the Motion Picture by LESLIE BRICUSSE and ANTHONY NEWLEY

Orchestrations by
DOUG BESTERMAN

Arrangements by
MARC SHAIMAN

Digital scenery licensed through special arrangement with Broadway Media (www.broadwaymedia.com).

CHARLIE AND THE CHOCOLATE FACTORY is presented through special arrangement with Music Theatre International (MTI).
All authorized performance materials are also supplied by MTI. www.mtishows.com

DIRECTOR
MATTHEW DUMOUCHEL

CHOREOGRAPHER
CINDY PATTISON-RIVARD

MUSICAL DIRECTOR
NICHOLAS MORVAY

TECHNICAL DIRECTOR
FILIP KHAN

WITH

EVANGELINE SCOTT, DANE FADER, ANDY CARSCADDEN,
JENNIFER REISCH, DANIEL PIKE, BROOKLYN DOBSON, KASHVI SHARMA,
ERIC DROSKI, ALEX RAISBECK, JEFFREY GARTSHORE,
JASON ANDREW, AMY PINSONNEAULT

AND

MICHEAL ROY, DAYNA CORNWALL, PETER HRASTOVEC, DAWN BOSCO,
ELIZABETH REVINGTON DURANCE, ERIN IVERSON, ROD TURTON,
DIANA CUCKOVIC, JAEDYN ELLIS, SAVANNAH GUILBEAULT,
CHANTELLE MCINTYRE, NATHALIE MERO, MARIO MUSCEDERE,
ABIGAIL MUWANGA, BRENT ONESCHUK, RITA SAAD,
MATTHEW VOJVODIN & RENÉE WULTERKENS

WHO WE ARE

Founded by Dr. John Watson in 1948 as the Windsor Light Opera Association, in our first year we presented *The Pirates of Penzance* with 43 cast members on stage. In the early years, we produced what was, at the time, referred to as operettas or “light operas”, which reflected in the name. Since that time, musicals have changed and so has our name. In 2007, Windsor Light Opera Association became Windsor Light Music Theatre (WLMT) to better encompass the shows being produced but still keeping the “Light” aspect of the shows being chosen and performed by the group. Today WLMT continues to produce two full scale Broadway musical productions every year as well as a Youth Theatre production.

WLMT is a member-based, non-profit organization whose tireless volunteers come from all walks of life. Year after year their hard work and dedication make it possible to fully realize these Broadway shows for the enjoyment of Windsor and surrounding area audiences. As a part of Essex County’s cultural industry, Windsor Light Music Theatre provides a creative outlet for our diverse and multi-generational community; we are proud to be the amateur beginning to many professional level careers.

BOARD OF DIRECTORS 2022-2023



Back Row: Amber Thibert (Marketing Chair), Jason Andrew (Treasurer), Kaylee McCulloch (Executive Scretary)

Second Row: Chantel Kuli (Recording Secretary), Sarah Jane Morvay (Director at Large), Liz Sands (Administrative Chair), Mario Caschera (Production Chair)

Front Row: Matthew Dumouchel (President), Chris Hickman (Vice President), Rod Turton (Youth Chair)

Missing: Micheal Roy (Membership/Social Chair)

DIRECTOR'S MESSAGE

As a passionate creative, in awe of the power of theatre to unite an audience, I have been given an exciting opportunity to find a way to tell the story of hope in a way that is reminiscent of its original form, yet modern in its approach. Breathing life into the classic story of Charlie and the Chocolate Factory gave us a chance to bring this chocolatey world to a tangible form at the Chrysler Theatre. Our vision from the start was to remind ourselves of how the world looks from the eyes of a small child, whose real joy in life has been brought on by their own power of imagination.



Our mission was to captivate using sensationalised characters, bright colours, and magical moments in a way that hasn't been seen before in our community. The end result is the fantastically enthralling journey of Charlie Bucket, on a mission to dream bigger and make her wishes come true.

I have found myself surrounded by insanely talented and committed artists for the past six months. This is a privilege that I am forever grateful for. Every speck of paint, lyric put to music or chocolate eaten was intentionally laid out by a group of individuals I am proud to work with.

Windsor Light Music Theatre is home to so many, both on and off stage but we are nothing without our audiences. You bring us joy, the passion to pursue our own dreams and the desire to do it year after year. Now after countless hours of dedication, my only wish is for you to be enraptured and fascinated by the world we all had a hand in creating.

Matthew Dumouchel
Director



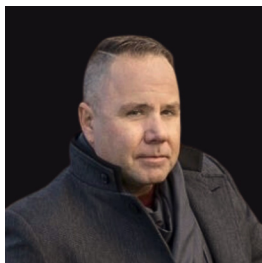
**PROUDLY SERVING
CUSTOMERS SINCE 1984**

WWW.WOLVERINEFREIGHT.CA

WOLVERINE FREIGHT SYSTEM

VICE-PRESIDENT'S MESSAGE

Theatre has long been a source of entertainment and inspiration for people of all ages. It is an art form that sparks the imagination, allowing us to explore different cultures, perspectives, and emotions. Whether we are watching a play in a theatre or streaming it online, theatre can transport us to another place and time. It can also help us better understand ourselves and the world around us.



For 75 years, WLMT has provided entertainment and joy to the communities of Windsor and Essex County. We owe a great deal of our success and longevity to our volunteers and audiences who have supported us throughout this journey. Without their dedication, we would not be where we are today.

Our 75th season began in April, with a successful run of *Beauty and the Beast Jr.* Under the leadership of Rod Turton, our talented WLMT youth members delighted audiences of all ages with this tale as old as time. Congratulations to all who had a hand in bringing this timeless treasure to the stage. The importance of youth theatre cannot be overstated; it provides an invaluable opportunity for growth and development that benefits participants long into the future. Moreover, youth theatre encourages collaboration and community-building and helps to foster creativity and critical thinking. By engaging in youth theatre activities, young people can develop essential life skills such as communication, teamwork, problem-solving and self-confidence. Attributes that are needed today, tomorrow, and always.

WLMT's current production of *Charlie and the Chocolate Factory* is a classic story that has been loved by people of all ages. It is a story of hope, optimism, and resilience in the face of adversity. Congratulations to Matthew Dumouchel on his stunning directorial debut with WLMT. His leadership, coupled with the talents of his vibrant production team, have truly created a world of pure imagination!

The WLMT Board of Directors would like to express our sincerest gratitude to our audience for their continued support of community theatre. Your enthusiasm and commitment to the arts is inspiring, and we are so thankful for your presence at each performance. We know that without you, our productions would not be possible. Thank you for being a part of our community theatre family!

We look forward to seeing you at our next production, *The Sound of Music*. Also, please consider joining us on October 14th for our 75th Anniversary Gala. A fun-filled evening of dinner, dancing, and music. Tickets are now on sale. Go to www.windsorlight.com for more details.

Chris Hickman
WLMT Vice-President



THE CITY OF WINDSOR

OFFICE OF THE MAYOR

DREW DILKENS, DBA
MAYOR

**"Hold your breath, make a wish, count to three.
Come with me and you'll be in a world of pure imagination...
Anything you want to do, do it.
Want to change the world? There's nothing to it."**

Charlie and the Chocolate Factory is certainly Roald Dahl's most treasured story. This new musical adaptation offers audiences of all ages the sense of hope and wonder we crave from this beloved tale of famous inventor Willy Wonka's fantastic and mysterious world, and the young child who accesses the unimaginable by way of a golden ticket. This is the 143rd major musical production presented by Windsor Light Music Theatre (WLMT), and it comes to us on the beautiful stage of the waterfront Chrysler Theatre.



This new version of the musical premiered in London's West End at the Theatre Royal Drury Lane in June 2013 and ran for almost four years before closing. The show was reworked for a Broadway production in 2017, and takes its inspiration from multiple sources including Dahl's original novel, the Gene Wilder led 1971 film *Willy Wonka & the Chocolate Factory*, and the 2005 Tim Burton helmed *Charlie and the Chocolate Factory* starring Johnny Depp. From the New York Times Best Sellers list to Hollywood screens... from Broadway to Windsor... wherever, whenever, and however it plays, this story never fails to thrill audiences with its music, visuals, characters, iconic moments and pop-culture references. At the heart of our fascination with the story is the sense of hope in the story of a regular every day person who has the opportunity to experience something magical. This story teaches us to be grateful for what we have, and cautious of what seems too good to be true.

It is exciting to see WLMT tackle this tale, and to see them breaking down barriers of how stories are told and who tells them with this latest production. This is a strong choice for WLMT – truly one of the great artistic and cultural institutions in our community, and one that is celebrating its milestone 75th anniversary of live theatre this year. This innovative, resilient, ever-evolving performing arts organization has built a family of artists and creators over seven decades. These incredible and talented singers, dancers, musicians, technicians, designers and costumers raise the bar year after year, taking us on adventures we will never forget. To everyone working onstage and behind the scenes, and everyone filling the Chrysler Theatre seats to experience the magic... thank you for what you add to Windsor's rich arts and culture community. Now sit back and enjoy because, *"Beyond this door's invention, where mind meets machine, beyond this gate astonishment waits... but it must be believed to be seen."*

Sincerely,

Drew Dilkens

SPONSORS

This presentation of CHARLIE AND THE CHOCOLATE FACTORY would not be possible without the generosity of our Sponsors listed below:



Southwestern Ontario's Entertainment Magazine
519magazine.com



DR. TYSON JOSEPH DR. CURTIS SEMPLE DR. DAVID PICHE
1000 TOWNSHEND ROAD W. WINDSOR, ONT. N9A 7P9 4010 MAINTENANCE DR. WINDSOR, ONT. N9A 7P9
1-800-969-9696 1-800-969-9696
WWW.WALKINCHIROPRACTIC.COM

The Board of Directors is thrilled that these outstanding local organizations and community members have chosen to demonstrate their commitment to Windsor Light Music Theatre through their financial support.

Clearly, they share our vision of bringing to the stage consistently high-quality theatre, showcasing the superb on-and-off-stage talents that the Windsor community has to offer. With their ongoing and generous support, we shall continue to bring you premiere musical theatre experiences such as the one you are about to experience.

If you would like more information on becoming a Sponsor, please contact us at 519-974-6563 or visit windsorlight.com/sponsor

ACKNOWLEDGEMENT & THANKS

Thank you to the following individuals for their contributions to this production:

- Jamie Metcalfe for donating the use of the Remote Controlled Car
- Angela Nitchke and Morleigh Ufford for their help in the paint and props departments
- Robert Barsotta for 3D printing props
- Christopher Karcz for designing the Wonka Bars used in the show
- Devonshire Mall for hosting our Sneak Preview event on March 25
- Xperience Home Health Care for supplying the batteries for our motorised boat.
- Leisa, Jodie and the team at the Budimir Public Library for organising the great activities during our Live at the Library event
- Promo Video created by Gene Schilling
- Promo Photos taken by Gabrielle Smith

THEATRE ETIQUETTE

- Turn off or silence all electronic devices
- Do not talk, whisper, sing or hum during the performance
- Unwrap cough suppressants before the show begins or during intermission
- Keep feet on the floor, not on the seat or railing in front of you
- Be considerate of those around you
- If you bring your child to the theatre, prepare them beforehand by telling them about theatre manners
- Performers appreciate the enthusiastic applause, shouts of "Bravo" or "Brava", and standing ovations
- At the end of the performance during curtain call, do not rush for the exits

THEATRE WARNING

The use of any recording device, either audio or video, and the taking of photographs, either with or without flash, is strictly prohibited. Please turn off all electronic devices such as cellular phones, pagers and watches.



PEDIATRIC DENTIST

ALEXANDRIA MERIANO B.Sc. D.D.S M.S. F.R.C.D. (C.)
CERTIFIED SPECIALIST TREATING INFANTS, CHILDREN & ADOLESCENTS

Windsor Health Centre, Plaza 400
1720 Howard Ave., Suite 358, Windsor, ON N8X 5A6
www.drmeriano.com (519) 977-0325

MUSICAL NUMBERS

ACT ONE

The Candy Man

Willy Wonka and Ensemble

Willy Wonka! Willy Wonka!

Charlie Bucket and Ensemble

The Candy Man” (Reprise)

Charlie Bucket

Charlie, You and I

Grandpa Joe

A Letter from Charlie Bucket

Charlie Bucket, Mrs. Bucket, and
Grandparents

More of Him to Love

Mrs. Gloop, Augustus Gloop, and
Ensemble

When Veruca Says

Mr. Salt and Veruca Salt

The Queen of Pop

Mr. Beauregarde, Violet
Beauregarde, and Ensemble

What Could Possibly Go Wrong?

Mrs. Teavee, Mike Teavee, and
Ensemble

If Your Father Were Here

Mrs. Bucket

I’ve Got a Golden Ticket/Grandpa Joe

Charlie Bucket, Grandpa Joe,
Grandparents, and Mrs. Bucket

It Must Be Believed to Be Seen

Willy Wonka and Company

ACT TWO

Strike That! Reverse It!

Willy Wonka and the Golden
Ticket Winners

Pure Imagination/ “Grandpa Joe (Reprise)

Willy Wonka, Charlie Bucket,
Grandpa Joe, and the Golden
Ticket Winners

The Oompa Loompa Song/ Auf Wiedersehen Augustus Gloop

Willy Wonka and the Oompa-
Loompas

When Willy Met Oompa

Willy Wonka and the Oompa-
Loompas

Veruca’s Nutcracker Sweet

Veruca Salt, The Squirrels and
the Oompa-Loompas

Vidiots

Willy Wonka and the Oompa-
Loompas

The View From Here

Willy Wonka and Charlie

RUN TIME: 150 minutes (2 hours and 30 minutes), including one intermission

CAUTIONS: This production will contain the use of fog, strobe lighting, sudden loud noises and haze.

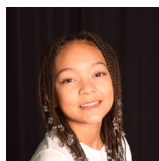
ORCHESTRA

Director/Conductor/Keyboard.....	Nicholas Morvay
Piccolo, Flute, Clarinet, Saxophones.....	Sebastian Bachmeier
Clarinet, Bass Clarinet, Saxophones.....	Trevor Pittman
Trumpet.....	Robert Fazecash
Trombone.....	Michael Stone
Drums and Percussion.....	Vanessa Harnish
Keyboard.....	Michael Karloff
Keyboard.....	Michelle Richardson
Guitars.....	Erik Ingals
String Bass.....	Ryan Fontaine

CAST OF CHARACTERS

Charlie Bucket.....	Evangeline Scott
Willy Wonka.....	Dane Fader
Grandpa Joe.....	Andy Carscadden
Mrs Bucket.....	Jennifer Reisch
Augustus Gloop.....	Daniel Pike
Veruca Salt.....	Brooklyn Dobson
Violet Beauregarde.....	Kashvi Sharma
Mike Teavee.....	Eric Droski
Mrs Gloop.....	Alex Raisbeck
Mr Salt.....	Jeffrey Gartshore
Mr Beauregarde.....	Jason Andrew
Mrs Teavee.....	Amy Pinsonneault
Jerry Jubilee.....	Micheal Roy
Cherry Sundae.....	Dayna Cornwall
Grandpa George.....	Peter Hrastovec
Grandma Georgina.....	Dawn Bosco
Grandma Josephine.....	Elizabeth Revington Durance
Mrs Green.....	Erin Iverson
Mr Bucket.....	Rod Turton
Gum Chompin' Divas.....	Diana Cuckovic, Savannah Guilbeault, Nathalie Mero, & Abigail Muwanga
Squirrels.....	Diana Cuckovic, Chantelle McIntyre, Nathalie Mero, Elizabeth Revington Durance, & Renee Wulterkens
Ensemble.....	Dayna Cornwall, Jaedyn Ellis, Erin Iverson, Mario Muscedere, Brent Oneschuk, Cindy Pattison-Rivard, Micheal Roy, Rita Saad, Matthew Vojvodin, & Rod Turton
Pit Chorus.....	Doug Burt, Steven Carver, David Farron, Maria Harman, Grant Jonsson, Trish Kenny, Erin Polachok, Courtney Scratch, Cathy Shanahan, Gerry Turmel, Jeanette Carey-Polchok, Jim Reid, Kathleen Paterson, Kelly Woltz, Lisa Leboeuf-Langis, Marlene Moore, Ruthie Waltman, and Irene Wood





**Evangeline Scott
(Charlie Bucket)**

Evangeline started her theatre journey at the young age of eight years old. Previous WLMT credits: Grace Smythe (A Christmas

Carol 2022), Lavender (Matilda 2019) and Ensemble (Lion King Jr 2019). Now at the age of twelve she is ready to take on her biggest role to date! She dedicates this show to those who push boundaries. She thanks all of her family and friends for their continued support.



**Andy Carscadden
(Grandpa Joe)**

Andy is really looking forward to revisiting the Chocolate Factory, having played Mr. Bucket in WLMT's Willy

Wonka in 2010. He is a life member of WLMT, appearing on stage in over 30 shows. Recent roles include Sebastian in Cinderella, and Harry Bright in Mamma Mia. Thanks to Matt, Diana, Cindy, and Nick for the opportunity, and, of course, to Sharon for her understanding.



**Daniel Pike
(Augustus Gloop)**

Daniel is thrilled to work alongside the talented cast and crew in this production of 'Charlie', which marks his seventh show onstage

with WLMT. While Daniel works in marketing for a living, he enjoys filmmaking and writing in his spare time. Daniel would like to thank everyone at WLMT for welcoming him back with open arms and would like to dedicate the run of this show to his partner Chris Fudge.



**Kashvi Sharma
(Violet Bauregarde)**

Having previously been in Windsor Lights production of Matilda, Kashvi is thrilled to make her return to the stage as a gum-chomping

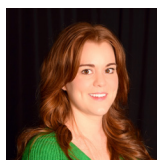
superstar! This September Kashvi will be heading to Brock University to start her first year in Concurrent Ba/BEd as a dramatic arts major. Kashvi would like to dedicate this show to her older sister Shradha to thank her for her continuous love and support.



**Dane Fader
(Willy Wonka)**

This show is a special full-circle moment for Dane. His first role ever was Charlie Bucket in WLMT's previous production of Roald

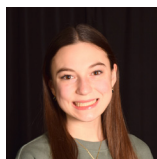
Dahl's Willy Wonka. Returning as Wonka 13 years later is beyond his wildest dreams. Somebody pinch him! As you exit the factory, remember: each of us is a "candyman" capable of making our own world taste good. Enjoy the show!



**Jennifer Reisch
(Mrs Bucket)**

Making her WLMT comeback in her 11th show, Jenn spent a decade in Toronto pursuing tv/film acting, theatre, CSR and

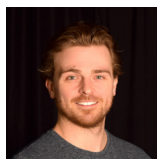
having a baby! In 2020, her family/friends embraced her return (& baby 2) with many warm meals and free babysitting! Favourite credits are Mary (Mary Poppins), Janet (Drowsy Chaperone), and Luisa (Fantasticks). This show is dedicated to David, for nudging her in the right direction.



**Brooklyn Dobson
(Veruca Salt)**

Brooklyn is a grade 11 student with a love for theatre. She is thrilled to be back at WLMT after her last performance as one of the

students in Matilda. Like Veruca, Brooklyn loves ballet and had the opportunity to train at the Royal Winnipeg Ballet last summer. She also plays piano, and of course, loves chocolate and candy! She hopes you enjoy the show and don't fall down the bad nut chute!



**Eric Droski
(Mike Teevee)**

Eric is beyond excited to be back on stage for his second performance with Windsor Light, having been part of the ensemble last

spring in Cinderella. He can't wait to make people "love to hate" his version of Mike Teevee. He would like to dedicate this show to his father-in-law, Frank, a man worth a million golden tickets.

CAST CONT'D



**Alex Raisbeck
(Mrs Gloop)**

This is Alex's Windsor theatre debut and she is so proud to be in this amazing cast! A theatre professional since the age of 13, Alex is

a graduate of the Musical Theatre program at Sheridan College and performs alongside husband Justin in their acoustic duo Forever June. foreverjune.ca. HUGE thanks to Matt and the WLMT team for the golden ticket back to the stage! This one is for all her boys.



**Jason Andrew
(Mr Beauregarde)**

This is Jason's third show with WLMT and he is excited to once again share the stage with such talented cast and crew members.

Recent credits include: Ghost of Christmas Present, Prince Topher, Pharaoh, Bert, Captain Phoebus, and Gaston. Love and gratitude to my partner Jason!



**Micheal Roy
(Jerry Jubilee)**

Micheal is thrilled to be back on stage after having directed WLMT's Fall 2022 production of A Christmas Carol the Musical. He is

a proud Life Member, part of the Board of Directors, and has been with WLMT since 2010. Select credits include Lord Pinkleton (Cinderella), Doctor (Matilda), Chadwick (Elf), as well as having performed locally with many choirs and the WSO. Thank you to Matt, Nick & Cindy for the opportunity!



**Peter Hrastovec
(Grandpa George)**

Despite a grouchy nature, Peter is thrilled to return to the stage with a fabulous cast and crew. "Sweet" thanks, Matt and Diana.

Credits include Elf, Beauty and the Beast, It's a Wonderful Life, Mary Poppins, Driving Miss Daisy, Wizard of Oz, A Christmas Story. Peter sends love to family, grandkids and co-grandparent, Denise, his beloved "golden ticket".



**Jeffrey Gartshore
(Mr Salt)**

Jeff is a French and Music teacher, working in Chatham. He is a father, husband, brother, cellist, medieval fencer/Herald,

author, camp director, and music director. He has performed with the University of Windsor Chamber Choir, the University Players, the Windsor Community Orchestra and the Windsor Classic Chorale. Working with WLMT has truly been a "coming home" for him.



**Amy Pinsonneault
(Mrs Teavee)**

A life member of WLMT, Amy is thrilled to be a part of "Charlie and the Chocolate Factory". Over the years, Amy has held

many roles with WLMT. Some of her favourite onstage roles include Mother in "Ragtime", Drowsy in "Drowsy Chaperone", Anna in "The King & I" and Rosie in "Mamma Mia". Amy thanks her family and friends for their continued support. Happy 75th Anniversary Windsor Light!!



**Dayna Cornwall
(Cherry Sundae)**

Dayna is delighted to have this opportunity to pursue her long-buried fantasy of being an obnoxious tv anchorperson! She has

been a WLMT member since 2016; past roles include "Silly Girl" (Beauty and the Beast), "Ali" (Mamma Mia!), "Kathy Seldon" (Singin' in the Rain), and "Mrs. Wormwood" (Matilda). Huge thanks to Matt, Diana, Nick, and Cindy for their wonderful leadership.



**Dawn Bosco
(Grandma Georgina)**

Dawn is elated to be performing in Charlie and the Chocolate Factory! Her first on stage performance was last May in Cinderella.

She worked as part of the paint crew and the backstage crew in A Christmas Carol. She loves all aspects of being involved with WLMT. Dawn would like to thank her family & friends, and to dedicate this show to all the magic makers behind the scenes!

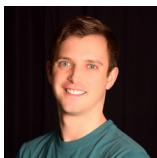
CAST CONT'D



**Elizabeth Revington Durance
(Grandma Josephine)**

Elizabeth is thrilled to be performing on stage in her 9th production with WLMT. Some of her credits are ensemble/dancer in Mary

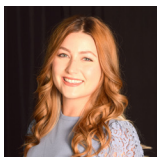
Poppins, Beauty and the Beast, and many other productions. The past year included Cinderella and A Christmas Carol. This is her 60th year dancing and she is honoured to share her love of dancing with WLMT's 75th anniversary! She dedicates this show to her family.



**Rod Turton
(Mr Bucket)**

Rod is delighted to be a part of this adventure after playing Charlie in his very first role over 15 years ago! This is his 11th

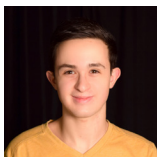
major musical with WLMT. When he's not on stage, he is the director of WLMT's Youth Performance Program. Special thanks to his family for their constant support. Rod would like to dedicate this show to all the Charlies out there waiting to find their own golden ticket!



**Savannah Guilbeault
(Ensemble)**

Savannah is thrilled to be back for her second show with WLMT, the first being Cinderella. Huge thanks to the cast and crew for all of

their hard work. She would like to dedicate this show to her friends and family and thank them for their support. Enjoy the show!



**Mario Muscedere
(Ensemble)**

Mario is excited to be performing with Windsor Light once again. Starting with the youth program in 2013, Mario is excited

to be involved in his 4th major Windsor Light production. Select credits include Zazu (Lion King Jr.), Ensemble (Cinderella), and most recently Mr. Bones/Ensemble (A Christmas Carol). He would like to dedicate this performance to his family for always supporting him.



**Erin Iverson
(Mrs Green)**

Erin is thrilled to be back with Windsor Light for her second show! After a long hiatus from the stage, Erin caught the theatre bug last

year during WLMT's production of Cinderella and hasn't looked back since! She is grateful for the family that Windsor Light has given her and is excited for more shows to come. She hopes you have the best time in our world or pure imagination!



**Jaedyn Ellis
(Ensemble)**

Jaedyn is overjoyed to be back on stage in a world of pure imagination, since his last performance in 2019.

Jaedyn has previously appeared in two other WLMT shows - Hairspray (a nicest kid in town) and Matilda (Ensemble). He would like to thank his family and friends for all of the love and support they have given him! Enjoy this tasty treat we have in store!



**Chantelle McIntyre
(Ensemble)**

Chantelle is so excited to be part of the ensemble for Charlie and the Chocolate Factory! She made her WLMT debut last spring in

Cinderella as part of the female ensemble. She'd like to thank all her family and friends for coming out to see the show!



**Abigail Muwanga
(Ensemble)**

Abigail is a junior in high school, and is a theatre kid at heart. From performing in her living room to stage, she is delighted to start her

journey with WLMT. This is her first show with WLMT. She would like to dedicate this performance to her loving family and friends, and she sends many thanks for all of their support. Enjoy the show!

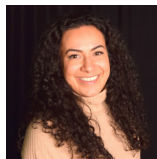
CAST CONT'D



Brent Oneschuk (Ensemble)

This Golden Ticket winner is so excited to join the cast for his 10th show with WLMT! As an elementary music teacher, Brent

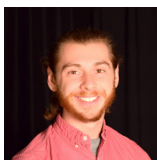
strives to reach his student's potential and showcase their talents. He would like to thank the Roseville PS staff, his loving family, his caring & supportive partner, and incredible friends for always finding the best in him — you're all worth more than a chocolate factory!



Rita Saad (Ensemble)

Rita is thrilled to be back on stage for her third show with WLMT. Previous WLMT credits include Ensemble in Hairspray and Cinderella.

Rita would like to dedicate this performance to her chocolate loving nieces. Enjoy the show!



Matthew Vojvodin (Ensemble)

Matthew is a student at the University of Windsor studying computer science. He is excited to be back with WLMT for his second

show. He loves to sing, knit, and play board games. He hopes you enjoy this sugar rush of a performance and dedicates this show to his family and friends.



Renee Wulterkens (Ensemble)

Renee is so excited to be performing again with WLMT! She is currently studying Biomedical Sciences at UWindsor

but in her free time loves being at the rehearsal hall. She has been a member since 2013, appearing in Hairspray, Elf and Mary Poppins. She would like to thank her amazing family and friends for all of their support. And thank you to this amazing cast for making the show a SWEET one!

PIT CHORUS



Back Row: Kathleen Paterson, Grant Jonsson, Doug Burt, Maria Harman, Jim Reid, Pattie DiMaggio, Jeanette Carey-Polachok, Lisa Leboeuf-Langis, Courtney Scratch, and Irene Wood **Front Row:** Marlene Moore, Ruthie Waltman, Erin Polachok, David Farron, and Gerry Turmel **Missing:** Trish Kenny, Cathy Shanahan, Steven Carver, John Whatley

In Memoriam



Natalia Caroline Wilk

Feb 1, 1926 - Feb 22, 2023
Member for over 60 years

Walter Pasnik

June 3, 1927 - Feb 25, 2023
Founding/Charter Member

Walter Pasnik, WLMT's last living founding/charter member, passed away on February 25 at the age of 95. We welcomed Mr. Pasnik recently to our 70th anniversary celebration and we were told he was looking forward to celebrating with us this upcoming October for our 75th gala as well.

Nettie Wilk passed away on Feb 22 at the age of 97. Her husband, Michael Wilk, was Windsor Light's resident photographer for over 60 years, capturing beautiful imagery of our cast and crew. Nettie was always by his side and shared in as much of the creative process as Michael, including making sure the cast could all be seen from the balcony. She was a joy to be around and loved our organization so much.

**COMMUNITY VOTES WINDSOR
PLATINUM WINNER - 2 YEARS IN A ROW**

FLORIST/FLOWER SHOP
GARDEN CENTRE
HOME DECOR

*2021, 2022

your one stop shop for locally curated



**FLORALS
HOUSEPLANTS
HOME DECOR
STYLING**

*helping to bring a calming
energy to your home*

WHEAT + THISTLE

f @WHEATANDTHISTLE

WHEATANDTHISTLE.COM

PRODUCTION

Director.....	Matthew Dumouchel
Choreographer.....	Cindy Pattison-Rivard
Music Director.....	Nicholas Morvay
Assistant Director.....	Diana Cuckovic
Assistant Choreographer.....	Natalie Mero
Technical Director.....	Filip Khan
Lighting Designer.....	Lucas Revenberg
Stage Manager.....	Ruthie McLean
Assistant Stage Managers.....	Chantel Kuli & Cyndy Silvus
AV Technician.....	Liz Sands
Wardrobe Managers.....	Sue Duranksy & Rose Renaud
Wardrobe.....	Shieanne Bennett, Monica Bissonette, Eileen Boyle, Ettore Bonato, Pat Busteed, Nancy Edwards, Lynne Morvay, Kathleen Patterson, Magdalene Shin & Denise Walmsley
Set Designer.....	Ruthie McLean
Head Carpenter.....	James Edwards
Set Construction.....	John Beemer, Claude Charlebois, Brent Deneau, Filip Khan, Gary McLaughlin, Jon Rae, Matt Stoyanovic, Luca Thibert & Eric Tulp
Head Painter.....	Diane Passador-Noble
Set Painting.....	Kim Buckley, Justin Cobbett, Megan Cornwall, Cassandra McQueen, Nancy Morand, Maia Nitschke, Kathy Roberts & Peggy Shearn
Hair & Makeup Manager.....	Lila Wright
Hair & Makeup Team.....	Yolande Antonuzzo, Jessica Dumouchelle, Julie Fader, Melina Green-Wright, Sarah Magone, Kaylee McCulloch, Maia Nitschke, Laura Pearce, Jared Vecchio
Sound Technician.....	Amanda Herlehy
Microphone Technician.....	Maryann Wood
Properties Manager.....	Rose Barton
Set Decorator.....	Dawn Renaud
Properties Team.....	DeeDee Barsotta, Sozan Boughner, Kim Buckley, Pat Buckley, David Burrows, Megan Cornwall, Janna Desmarais, Maria Harman, Natalie Introcaso, Norm Marshall, Randee Mayrand, Carol Newman, Rod Peturson, Dawn Renaud, Liz Sands & Maryann Wood
Backstage Commissionnaire.....	Chris McCulloch
Green Room Manager.....	Lindsay Longpre
Green Room Staff.....	Chris Fudge, Phil Longpre & Jack McGarry
Banquet Manager.....	Micheal Roy
Host Services Coordinator.....	Sherry Thompson
Marketing Chair.....	Amber Thibert
Marketing Committee.....	Kim Buckley, Dana Cavers, Angela Ibrahim, Krystal Laframboise, Gary McLaughlin, Sarah Morvay, Cindy Pattison-Rivard, Micheal Roy, Chrisandra Skipper & Gabrielle Smith

ADMINISTRATION & STAFF

Managing Director.....	Darren McCaffery
Building Custodian.....	Gerry Turmel
Social Media Managers.....	Chrisandra Skipper & Amber Thibert
Programme Coordinator.....	Micheal Roy
Programme Photography.....	Gary McLaughlin
Poster Design.....	Ben Potma
Archivist.....	Gerry Turmel

The **SoUND of MUSIC** AUDITIONS

This could be you!



AUDITION INFORMATION

The Sound of Music is a universal story of love, music, courage and the strength of the human heart. It is not a story that we will tell with a particular look and thus the cast may be comprised of a diverse group representing all people.

Auditions will be held at 2491 Jos St Louis Ave on the following dates and times (pre-registration is required):

- **Tue, May 23** - Optional Dance Workshop (7:00pm-8:00pm for Von Trapp children and 8:00pm-9:00pm for Rolf and Liesl)
- **Thur, May 25** from 7:00pm-10:00pm - Adult leads, ensemble & pit singers
- **Sat, May 27** from 10:00am-1:00pm - All Von Trapp children (except Liesl*)
- **Mon, May 29** from 7:00pm-10:00pm - Adult leads, ensemble & pit singers
- **Thur, June 1** from 7:00pm-10:00pm - Callbacks for adults and children

*Those wishing to audition for Liesl will be provided an audition time with the adult leads on May 25 or May 29

To register for an audition, visit windsorlight.com/soundofmusic

Upon completion of the form, a member of the production team will get back to you with your audition time and provide access to audition materials.

For further questions about The Sound of Music auditions, please email wlmtsoundofmusic@gmail.com

Performances will take place at the Chrysler Theatre
Nov 17 - 26, 2023 with rehearsals on Monday and Thursday evenings.

PRODUCTION & CREW



Matthew Dumouchel
(Director)

Matthew makes his WLMT directorial debut with this tongue-tastical classic! Assistant Director: WLMT Matilda (2019) and Willy

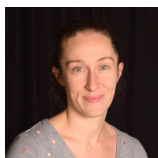
Wonka and the Chocolate Factory (2010). Other credits: Hairspray (Corny Collins), Cabaret (Bobby), A Christmas Carol (Mr Smythe); The Charlottetown Festival: The Nine Lives of Lucy Maud Montgomery (Gilbert Blythe). Are you ready to enter a world full of pure imagination?



Nicholas Morvay
(Music Director)

Nicholas graduated from The University of Windsor with degrees in music and education and did his Masters

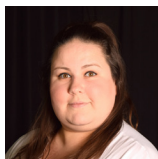
studies in composition at The University of Saskatchewan. He is the musical director at Emmanuel United and with the Windsor Essex Youth Choir. He also directs and sings with the acapella group Masquerade and plays with the WSO. This will be his 20th WLMT show as music director.



Nathalie Mero
(Assistant Choreographer)

This is Nathalie's first time taking part in a WLMT production. She has been involved with multiple theatre groups for over

15 years with varying positions backstage and on stage. Nathalie would like to thank her family and Cindy for putting trust in her dancing feet. Enjoy!



Chantel Kuli
(Assistant Stage Manager)

Chantel is so excited to be joining the backstage crew at Windsor Light for this Scrumdiddlyumptious show! A previous Windsor

Light Youth Choir member, Chantel has finally moved back to Windsor from a decade in Toronto that had her on stage as Mother Superior in Nunsense and Jack's Mother in Into the Woods. Chantel would like to say a big thank you to her husband and her family for their support.



Cindy Pattison-Rivard
(Choreographer)

Cindy's first experience with WLMT was this past fall in A Christmas Carol. She is an avid theatre buff and has always had the desire

to be on stage. Charlie and the Chocolate Factory will be her debut as choreographer with WLMT. With 48 years of teaching dance under her belt, Cindy is excited to share her enthusiasm with this wonderful cast. She would like to dedicate this performance to all her past students.



Diana Cuckovic
(Assistant Director)

Diana has been part of WLMT for many years, with credits including "Eliza" in King and I, "Cha-Cha" in Grease, and her favourite

as a Delta Nu in Legally Blonde. After recently trying her hand at production with choreography for A Christmas Carol, she is thankful for this first experience as Assistant Director. Thank you to her family who never miss a show, and to Matt for his faith and support!



Ruthie McLean
(Stage Manager/Set Designer)

Ruth McLean has two roles in this production; the stage manager and first-time set designer. She has been

involved in over forty shows in community theatre, both on and off stage. She loves every aspect of theatre! She hopes you enjoy the show.



Cyndy Silvius
(Assistant Stage Manager)

Cyndy has been a proud member of Windsor Light Music Theatre since 2012. This is her first time working backstage and she is

grateful for this opportunity and would like to thank Ruthie and Fil for their confidence and guidance. As always, she dedicates these performances to her grandson Fox.

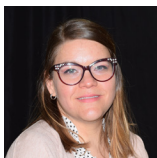
PRODUCTION & CREW



Filip Khan
(Technical Director)

Filip is proud to be part of Windsor Light's 75th Anniversary season. An active member in Windsor's theatre scene for

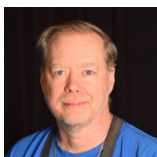
20-years and a resume of 70-productions. Favourites include diverse shows such as Matilda, Rent, The Drowsy Chaperone, Dreamgirls, Spamalot, West Side Story, and The Fantasticks. Congratulations to our Cast, Crew, and Directors. Thank you to all that support community theatre.



Amanda Herlehy
(Sound Technician)

Amanda has been a member of WLMT since 1998 and is excited to be back in the audio booth! Prior roles include

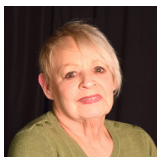
President, Executive Secretary, and Director on the Board as well as working backstage in the Props Department. Congratulations to the entire cast and crew! She would like to dedicate this production to her husband Derek for his love and support over the years.



James Edwards
(Head Carpenter)

This marks James' 76th musical production with WLMT. He is a third generation active life member. Over the years he

has taken on many roles. Starting in props then moving to lighting, sound, set design, construction, and also served on the Board of Directors. He is proud to be a part of the group's 75th anniversary.



Lila Wright
(Hair & Makeup Manager)

Lila is overjoyed to be part of this new production Charlie and the Chocolate Factory and helping Matthew with his first

directing experience. Lila looks forward to working with her amazing makeup and hair team and is excited to welcome back Melina and Sarah to the department.



Lucas Revenberg
(Lighting Designer)

Lucas Revenberg is a grade 12 student and is extremely excited to be back working with WLMT. Ever since he was kid he always had an

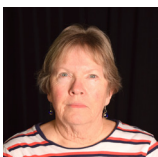
interest in lighting design. Select lighting credits include: A Christmas Carol (WLMT); Nightmare Before Christmas, James and the Giant Peach, Legally Blonde (LAFA). He would like to thank his family and friends for their continuous support throughout this project.



Diane Passador-Noble
(Head Painter)

Diane's first production with Windsor Light was back in 2002 on "How to Succeed in Business Without Really Trying" and volunteered in

every musical since. She is very excited to lend her imagination while painting these incredible sets.



Sue Duransky
(Wardrobe Manager)

Sue has been involved in the wardrobe department with Windsor Light for four shows. She enjoys working with the remarkably talented

team. It's been an interesting tenure.



Rose Renaud
(Wardrobe Manager)

Rose has been sewing for a number of years, learning at the young age of 10. Her four daughters have enjoyed her sewing

creations especially at Halloween. Costume making has been an enjoyable pastime and she is thrilled to be involved with the wardrobe department and loves to learn from the other talented sewing members. When not working on a show, she has resumed her love of making quilts.

PRODUCTION & CREW



Rose Barton
(Props Manager)

Rose is so excited to be working on her first full length production with WLMT! After a 5 year hiatus from theatre, she's

overjoyed to step back into the tech life and what she hopes to be a long stay at WLMT. She'd like to give a special thanks to the rest of the tech team, as she wouldn't be able to do what she does without any of them. After all, "Many hands make light work!"



Dawn Renaud
(Set Decorator)

Dawn is new to Windsor Light, having helped with wardrobe for the past 2 shows, she couldn't pass up the opportunity to work

on the set for this colourful show. Her love of candy has definitely come in handy! She is a trained esthetician who loves using her creativity anywhere she can. She enjoys doing renovations with her husband and building legos with her son.



Proud Ovation Sponsors

Of



WINDSOR LIGHT

MUSIC THEATRE



WARDROBE



Back Row: Shieanne Bennett, Denise Walmsley, Eileen Boyle, Monica Bissonette

Front Row: Sue Duransky, Nancy Edwards, Ettore Bonato, Magdalene Shin & Lynne Morvay **Missing:** Rose Renaud, Kathleen Patterson & Pat Busteed

CONGRATULATIONS

TO THE CAST AND CREW!

From your friends at



Head of the Class an award winning, locally owned tutoring centre that has been serving Windsor Essex since 2008.

Offering:

- free consultation
- 1:1 tutoring
- *NEW* Catch Up Club
- Anxiety Coaching
- Parent Support

Julie Fader

519-966-1774

headoftheclasseducation.com



HAIR & MAKE UP



Back Row: Lila Wright, Laura Pearce, Sarah Magone, Kaylee McCulloch & Julie Fader **Front Row:** Jared Vecchio, Jessica Dumouchelle, Yolande Antonuzzo & Maia Nitschke **Missing:** Melina Green-Wright

SET CONSTRUCTION



Back Row: Filip Khan, Claude Charlebois, Gary McLaughlin, Matt Stoyanovic & John Beemer **Front Row:** Jon Rae, James Edwards, Brent Deneau & Luca Thibert **Missing:** Eric Tulp



Back Row: Diane Passador-Noble & Kim Buckley **Front Row:** Maia Nitschke, Cassandra McQueen & Megan Cornwall **Missing:** Justin Cobbett, Randee Mayrand, Nancy Morand, Kathy Roberts & Peggy Shearn

Enter to Win OUR ONLINE 50/50 RAFFLE



FOR TICKETS:
www.windsorlight5050.com

Current draw date is June 15, 2023

ETTORE

SALON & AESTHETICS

AN AVEDA CONCEPT SALON

**AVEDA COLOUR,
AVEDA PRODUCTS,
AVEDA TRAINED SPECIALISTS**

**1346 OTTAWA STREET
WINDSOR, ONTARIO
519-254-8447**

WWW.ETTORESALON.COM



@ettoresalonaesthetics

Our Community. Our Priority.

At WFCU Credit Union, giving back to the community is part of who we are and what we do.

We're proud to support the **Windsor Light Music Theatre** which provides a creative outlet for a diverse and multi-generational community.



MARKETING



Back Row: Chrisandra Skipper, Cindy Pattison-Rivard, Micheal Roy, Sozan Boughner & Sarah Morvay **Front Row:** Gary McLaughlin, Amber Thibert, Kim Buckley & Dana Cavers **Missing:** Angela Ibrahim, Krystal Laframboise & Gabrielle Smith

PROPERTIES



Back Row: Liz Sands, Norm Marshall, Sozan Boughner, DeeDee Barsotta, Janna Desmarais, Maria Harman, Pat Buckley & Rod Peturson **Front Row:** Dawn Renaud, Megan Cornwall, Rose Barton, Carol Newman & Maryann Wood
Missing: Kim Buckley, Natalie Introcaso & David Burrows

HOST SERVICES



Back Row: Dave Waltman, Nino Marion, Bev Marshall & Peter Scott
Front Row: Sue Blaney, Sharon Hocevar, Barbara Mitchell Scott & Carol Burt
Missing: Alan Bouchard, Dave Charley, Jean Charley, Martin Link, Connie McLaughlin, Joy Penketh, Mike Thomson & Sherry Thomson

ADMINISTRATION & STAFF



Back Row: Micheal Roy, Lindsay Longpre & Darren McCaffery

Front Row: Gary McLaughlin, Phil Longpre, Chris Fudge & Kim Buckley

Missing: Christine McCulloch, Jack McGarry, Ruth McLean & Gerry Turmel



Full Service Media Production

SERVICING WINDSOR-ESSEX COUNTY

Commercial &
Promotional Video



Real Estate
Photo & Video



iGuide, Floorplans
and more



519-551-0606

www.enrouteproductions.ca

[f enrouteproductions](https://www.facebook.com/enrouteproductions)

[@en_route_productions](https://www.instagram.com/en_route_productions)

info@enrouteproductions.ca

DONORS

Visionary - \$1,000+ (Life Member)

Alan Bouchard
David Farron
Jack McGarry
John Whatley

Visionary - \$1,000+

Ettore Bonato
CANUE Windsor
Caitlyn Bondy

Benefactor - \$500+ (Life Member)

Eryl and Maresq Child
Kathleen Paterson

Benefactor - \$500+

Donna Brode

Supporter \$250+ (Life Member)

Norma Coleman
Connie & Rick Farrer
Nancy Edwards
Norma & Beverly Marshall
Barbara Mitchell-Scott & Peter Scott

Eric & Ann Skelton
Ruth, David & Jesse
Waltman

Supporter \$250+

James Bone
Peter Hrastovec
Maureen Paul

Patron \$100+ (Life Member)

David & Jean Charley
Sharon Hocevar
Carol Crooks & Alan
Johnson
Chris & Nancy Morand
Tracy Kwiatkowski-Pyles
Gerry Turmel
Ruth & David Waltman
Fred & Shelley Wassermann

Patron \$100+

Pat Busteed
Molly & Pierre Poirier

Friend \$15+ (Life Member)

Laurel Beechey
Peter Bulat
Julia Burgess
Doug & Carol Burt
Elaine Janosik
Marlene Moore
Donald Pyles
Sandra Renaud
Lynn Srokosz
Brenda & Jerry Udell

Friend \$15+

Emilie Dunnigan
Donna Finn
Doris Hawkins
Elaine Janosik
Len Manias
Sandra Renaud
Robert Riberdy
Lynn Srokosz
Joy Taylor-Penketh

Gifts have been received In Memory of the following beloved Windsor Light members:

Nettie Wilk
Walter Pasnik

*This list is as accurate as possible at the time of printing.

SMALL DONATIONS MAKE A BIG DIFFERENCE



Your tax-deductible gift is an investment in Windsor Light and a commitment to the arts community in Windsor-Essex.

With your partnership, Windsor Light continues to present the best of Broadway musical entertainment.

Visit our volunteers in the lobby or consider making a donation online today. ➡

For more information, visit windsorlight.com/donate



MEMBERS

CHARTER MEMBERS

*Mark Albery
 *Aurel Botosan
 *Cecilia Burke
 *Eileen Chisholm
 *Michael Gellner
 *Doreen Elliot
 *A.J. Gervais
 *Sam Graham
 *Alberta Hillam
 *Wilfred Hillam
 * Douglas H. Laing
 *Doreen Muirhead
 *Walter Pasnik
 *Ron Stubberfield
 *John H. L. Watson

LIFE MEMBERS

Collette Adams
 * Fred Ainsworth
 *Jean Ainsworth
 Reg Appleyard
 *Hector Audette
 Diane-Marie
 Azzopardi
 *John Baird
 *Norma Jean Baker
 *Mary Bannon
 *Gordon Barclay
 *Leitha Barclay
 *Mary Barnam
 *Marguerite
 Baynham
 William Becken
 *Archie Bedell
 Laurel A. Beechey
 *Douglas Beger
 *Clarence Bell
 Tim Belleau
 *Lois Bendler
 Chris Blackton
 Sue Blaney
 Carol Bondy
 James Bone
 Mary Ann Bone
 *Joy Boorn
 *Jean Boos
 Alan Bouchard
 *Annette Brand
 Alan Brown

James Bruce
 Peter Bulat
 Julia Burgess
 Marguerite
 Moncrieff-Buck
 *Elsie Burling
 Sheri Burnett
 David Burrows
 Carol Burt
 Doug Burt
 Betty Campbell
 Marion Campbell
 *Delores Campeau
 Joe Cardinal
 Andy Carscadden
 Mario Caschera
 Olga Casey
 Dave Charley
 Jean Charley
 Eryl Child
 Jack Chisholm
 Norma Coleman
 Bernice Cooper
 Jane Cornett
 Larry Crabtree
 Catie Craig
 Tracy Craig
 *Robert Cramp
 Pam Cramp
 Joan Cronmiller
 Carol Crooks
 Nilo Croppo
 Dietrich Damm
 Mark De Bloeme
 Mary Defour
 Carol Del Col
 Arielle Desamato
 Elizabeth Dick
 Dorothy Dombrowski
 Ted Douglas
 *Andre Dubois
 *Kathy Dubois
 Casey Dunbar
 David Earl
 James Edwards
 Jay Edwards
 Nancy Edwards
 *Richard Edwards
 Pat Eldridge
 *Steve Elsbrie
 Don Ellis

Megan Ellis
 Natalie Ellis
 *Herk Ely
 *Oda Ely
 *Doreen Elliot
 *June Elliot
 *Sarah Endo
 *Don Entwistle
 *Peggy Fairbairn
 *Betty Fairhurst
 *Cleva Fallon
 Connie Farrer
 Rick Farrer
 David Farron
 Bill Fleming
 *Harry Fiddler
 Paula Flood
 Cameron Forsyth
 *Charles Fox
 George Gaines
 *Pat Gaines
 Elizabeth Galvin
 Willie Galvin
 Shaynan Garrioch
 Sherry Garrioch
 Linda Gatt
 Rita Gatt
 Paul Gibbon
 Lois Gorski
 *Dorothy Graham
 Heather Grant
 *Jack Haggans
 *May Haggans
 *Irving Hansen
 Vicki Hansen
 Dixianne Harmount
 *Sylvia Harris
 Don Hart
 *Kathy Hart
 *Roger Harvey
 Joyce Haskings
 Emily Hastings-Speck
 *Peggy Hazael
 *Mary Lou Hebert
 Kim Herbst
 Sandra Heron
 Christopher Hickman
 *Keith Hillam
 *Shirley Hillam
 Shannon Hind

*Joe Hocevar
 Sharon Hocevar
 *Tom Howe
 *Jo Hubbard
 Joan Hunter
 Alison Jennings
 *Collin Johnson
 *Dessie Johnson
 Jean Johnston
 *Sally Kaufman
 *Dorothy Kenney
 *Lorna Kingsbury
 *Yvonne Knowles
 *Stan Kovacheff
 Shirley Krysztof
 Elyssa Kurylo
 Tracy Kwiatkowski-Pyles
 Kathleen Labudde
 Pat Laframboise
 *Tom Lapadat
 Mary Agnes Laporte
 Alberta Larocque
 Ellen Layson
 *Mary Lebert
 Lisa Leclair
 *Ed Lewis
 Phyllis Lewis
 Linda Linnell
 Jean Litster
 Robert Litster
 *Ernie Lock
 *George Lock
 *Irene Love
 Linda Love
 Mary Lunt
 Midge Mailloux
 Paul Major
 Tom Malanfant
 Edward Malone
 Erin Malone
 Fran Malone
 Jackie Malone
 Bev Marshall
 Norm Marshall
 Ken McAuslin
 *Marilyn McCowell
 Christine McCulloch
 Kaylee McCulloch
 Kendall McCulloch
 *Ellen McDonald

*Tom McDonald	Kay Reeves	Jerry Udell	ACTIVE MEMBERS
Jack McGarry	Mark Reeves	Anita Vachon	Stephanie Allen-
Jean McLaren	Sue Reeves	Cheryl Vance	Santos
Larry McLaren	Jim Reid	Robin von	Judi Alrayyes
Tom McLaren	*Isobel Riding	Bodenhausen	Mariyah Alrayyes
Marbeth McLean	*Wally Riding	Brent Walker	Jason Andrew
Constance	Kathy Roberts	David Waltman	Lesley Andrew
McLaughlin	*George Robillard	Jesse Waltman	Marlene Avram
Gary McLaughlin	Lolly Robinet	Ruthie Waltman	Laila Baldwin-
*Gordon McLaughlin	Will Robinet	Pat Waspe	Stewart
Pat McLaughlin	Hugh Robson	Ruth Wass	DeeDee Barsoda
*Jessie McLean	Alison Rogers	Fred Wassermann	Rose Barton
*Isabella McLelland	Kathy Rogers	Shelley Wassermann	Angela Bechara
*Helen McMenemy	*Ken Robbins	*Barbara Whatley	Corinne Beneteau
James Meredith	Nadia Santarossa	John Whatley	Shieanne Bennett
Carole Meyer	*Pat Scarpelli	*Veronica Whatley	Alley Biniarz
Barbara Mitchell-	Ann Scott	Jackie White	Easton Blackmore
Scott	Peter Scott	*Sharron White	Ettore Bonato
Jason Molyneaux	Tony Serrano	Caroline Whitehead	Caitlyn Bondy
Irene Molyneaux	Fred Shulak	*Royden Whitehead	Charlotte Bondy
William Molyneaux	*Ginger Siversn	David Wildman	Mia Boschin
Marlene Moore	Ann Skelton	*Mike Wilk	Dawn Bosco
*Roger Moore	Eric Skelton	*Nettie Wilk	Sozan Boughner
Chris Morand	Eileen Smith	*Irene Wilson	Nicole Briskin
Nancy Morand	*Olive Smith	Lila Wright	Kim Buckley
Pat Morneau	*George Sprague	Laurie Zorzit	Pat Buckley
*Marg Moss	Ellen Starkiss		Pat Busteed
*Violet Murphy	*Mike Starkiss	ENCORE – LIFE	Giselle Butler
*Walter Murphy	Liliana Steckle	MEMBERS	Mia Cabert
Walter Mykytyn	Peter Steckle	Kimberley Babb	Jeanette Carey-
Mary Pat O'connor	*Betty Stewart	John Beemer	Polachok
Linda Ossington	*Tom Stewart	Amy Cooper	Allesia Carlesimo
Kim Ottogalli	Melissa Stobbs	Brent Deneau	Steven Carver
Doris Palmer	*Les Suddick	Cathy Diodati	Dana Cavers
*June Parnell	Kevin Suddick	Matthew Dumouchel	Emily Charbonneau
Diane Passador	*Marion Suddick	Julie Fader	Claude Charlebois
Kathleen Paterson	*Larry Sunderland	Amanda Herlehy	Brittany Clift
*Hilda Patrick	Marion Taliscka	Filip Khan	Dennis Clift
*Cameron Paulin	*Ken Taylor	John Luther	Maya Coene
*Robert Pearson	*Pam Taylor	Sarah Magone	Dayna Cornwall
Joy Penketh	Grant Temple	Ruth McLean	Megan Cornwall
Debbie Pickthall	Christine Teron	Laura Pearce	Liam Couvion
Amy Pinsonneault	*George Teron	Kate Reive	Jonathan Crane
*Don Piper	Amber Thibert	Micheal Roy	Diana Cuckovic
*Margaret Pond	Cheryl Thomson	Liz Sands	Theresa Currie
*Robert Pond	Mike Thomson	Allen Shearn	Alicia Dai
Aisha Poku-Christian	*Ann Torrie	Peggy Shearn	Lucas Delicata
Kamilah Poku-	*Diane Turmel	Kristen Siapas-	Emily Deimling
Christian	Gerald Turmel	Laughton	Janna Desmarais
*Bill Premin	*Ron Turner	Rod Turton	Elle Deters
Heather Radigan	Amanda Udell	Maryann Wood	Massimo Devito
*Bill Reeves	Brenda Udell		Amelia Dias

MEMBERS CONT'D

Pattie Dimaggio	Natalie Kindiak	Seth Ouellette	Luca Thibert
Brooklyn Dobson	Keira Koolen	Jennifer Palmer	Rae Treverton
Josephine Donnelly	Laura Korlaki	Avery Patterson	Eric Tulp
Alexis Dorazio	Julia Kosciuk	Cindy Pattison-	Morleigh Ufford
Eric Droski	Everly Krause	Rivard	Jared Vecchio
Justin Duff	Delilah Krebibich	Kim Pearce	Micha Vilade
Jessica Dumouchelle	Kalista Krissdottir	Taliah Pearce	Matthew Vojvodin
Elizabeth Durance	Lucy Krug	Joy Peneketh	Gweyneth Wallace
Susan Duransky	Chantel Kuli	Rod Pertuson	Jim Walls
Everleigh Durst	Kortney Lacoursiere	Daniel Pike	Jessica Westley
Jaedyn Ellis	Danica Laforest	Heidi Plante	Maisie Williams
Dane Fader	Cyrah Laforet	Erin Polachok	Kelly Woltz
Amy Fauteux	Krystal Laframboise	Barbra Porter	Irene Wood
John Fleming	Sophie Laughton	Keyaira Preddie	Renee Wulterkens
James Fleming	Vanessa Lavin	Jon Rae	Solaea Zeman
Cara Fram	Lisa Leboeuf-Langis	Alex Raisbeck	Alexander Zhang
Christopher Fry	Candice Li	Vanessa Randell	Jingzi Zhu
Mena Fusaro	Lindsay Longpré	Jennifer Reisch	
Emma Gabiniewicz	Phil Longpré	Dawn Renaud	*deceased
Jeffrey Gartshore	Leah Lovie	Rose Renaud	
Caitlyn Gates	Ella Lucente	Jonathan Renaud	This list is as
David Germain	Kaitlyn MacEachern	Lucas Revenberg	accurate as possible
Doug Gouin	Malcolm	Claire Richer	at the time of
Samantha Goulet	MacEachern	Aidee Roberts-	printing.
Melina Green-Wright	Nino Marion	Maurizio	
Corbin Grundy	Randee Mayrand	Emilia Roehler	
Savannah Guilbeault	Chantelle McIntyre	Brooke Roubos	
Ema Gusho	Calum McMillian	Rita Saad	
Klea Gusho	Cassandra McQueen	Edward Savoie	
Aidan Guthrie	Nathalie Mero	Klaudia Sawiak	
Maria Harman	Daniela Miceli	Evangeline Scott	
Melody Hearn	Rayanne Mitchell	Courtney Scratch	
Jaclyn Hertel	Olivia Moavro	Catharine Shanahan	
Mel Holanda	Pearl Montcalm	Kashvi Sharma	
Medeiros	Lily Mora	Scarlett Shepley-	
Olivia Hong	Willow Mora	Campbell	
Peter Hrastovec	Blake Morency	Magdalene Shin	
Sean Humenny	Jesse Morin	Cyndy Silvius	
Angela Ibrahim	Lynne Morvay	Jessica Sinnott	
Natalie Introcaso	Nick Morvay	Chrisandra Skipper	
Steve Introcaso	Sarah Morvay	Gabrielle Smith	
Matthew Isherwood	Mario Muscedere	Cadye Solet	
Erin Iverson	Abigail Muwanga	Yilin Song	
Sara Jaques	Madison Nadon	Grace Sonoski	
Tyler Jaques	Falynn Nagy	Katie Soulliere	
Kristi Jasey	Carol Newman	Sheri Soulliere	
Amelia Jin	Maia Nitschke	David St.Germain	
Olivia Jones	Ashley Noelle	Matt Stoyanovic	
Cooper Jovanovic	Floyd Nolan-	Ella Svard	
Utkarsh Kamath	Ducedre	Briannah Taremwa	
Carol Kerr	Brent Oneschuk	Luke Taylor	



**WINDSOR
LIGHT**
MUSIC THEATRE

Drama CAMP



Visit www.windsorlight.com for details!

July 10 - 21

Ages 8 - 11

August 14 - 25

Ages 12 - 15



Riverfront
Theatre
Company



SHREK THE MUSICAL

May 19, 20, 26, 27 - 7 pm

May 21, 28 - 2 pm

Tickets \$20 Adu lts, \$15 students

Available through the Olde Walkerville
box office website

OLDE
Walkerville
THEATRE

1564 Wyandotte St. E.
519-253-2929

Shrek the Musical is produced by special arrangement with
Music Theatre International (MTI)

WLMT PRESENTS

TEEN THEATRE SHOWCASE

WLMT is excited to offer this
one-of-a-kind intensive course...
designed just for high school students!

ACTING TECHNIQUES

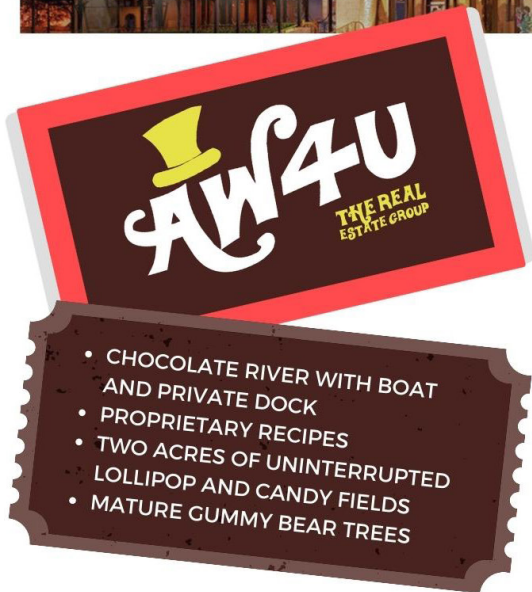
SPECIALIZED CHOREOGRAPHY

MASTERCLASS WORKSHOPS

END-OF-WEEK SHOWCASE

JULY 31 - AUGUST 4

Visit www.windsorlight.com
to get your spot today!



PAUL GERMANESE
REALTOR®



AW4U
THE REAL ESTATE GROUP
ALWAYS WORKING FOR YOU.

ROYAL LEPAGE
Binder Real Estate
BROKERAGE
INDEPENDENTLY OWNED AND OPERATED

AW4U.CA - PAUL@AW4U.CA - 519.817.3512

WRITING ABOUT & REVIEWING
LIVE LOCAL THEATRE
AND ENTERTAINMENT
FOR NEARLY A DECADE



Southwestern Ontario's Entertainment Newspaper

519magazine.com

**MIX
96.7**

**WINDSOR'S 95.9
COUNTRY 92.7**

**COOL
100.7**
GREAT HITS & REAL CLASSICS

WINDSOR
NewsToday.ca

A Presentation of Blackburn News

**WINDSOR
ESSEX'S
LOCAL
SOURCE
FOR THE
BEST
MUSIC
VARIETY &
RELIABLE
NEWS**

75TH

ANNIVERSARY

DIAMOND
GALA

CONTINUING TO BRING THE LIGHTS
OF BROADWAY TO WINDSOR

JOIN US OCTOBER 14, 2023 AT

ST. CLAIR COLLEGE
CENTRE FOR THE ARTS

TICKETS

\$100/PERSON (WLMT Members)
\$120/PERSON (Non-Members)

TO PURCHASE

CALL 519-974-6593
OR VISIT WLMTGALA.EVENTBRITE.CA

DOORS OPEN AT 6:00PM

ENJOY AN EXCITING EVENING OF DINNER,
DANCING, MUSIC, SILENT AUCTION AND MORE
ALL IN SUPPORT OF WINDSOR LIGHT MUSIC THEATRE